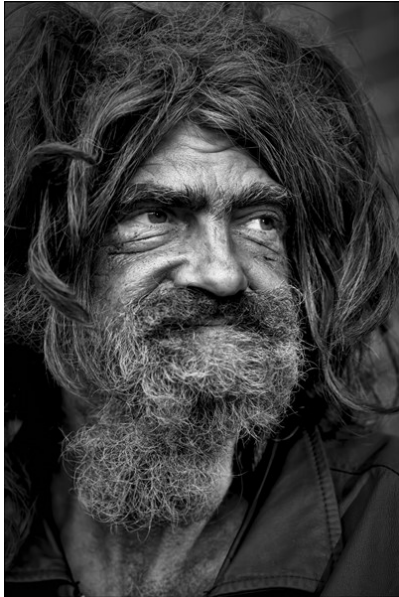


# Nightwatch News

April, 2018

## Homeless seniors

By Rev. Rick Reynolds



“Floyd” was a developmentally challenged homeless guy in his 70s. He was living outside, eating in various missions. In his younger days he was taken care of by his older sisters. But they died, and Floyd slipped through the cracks, until a volunteer brought him to Nightwatch Senior Housing. That volunteer came weekly to make sure Floyd had food in his fridge, clean clothes and bedding.

It was one of those quiet little miracles that happen at Nightwatch.

The first month Floyd paid his rent, he came into my office, dropped his drawers, and pulled out his money. “Floyd, you don't have to do that anymore. You're safe living here,” I told him. He got a wallet.

We've seen a growing number of seniors at Nightwatch. There were 460 homeless seniors who got food and shelter from us last year. 460. That's almost twice as many as 2016.

We want to do more. Can you help?

*Lord, please strengthen our hand in providing care to homeless seniors. ●*

## See Jesus

By Liz Fenn, Shelter Dispatch Manager

I have a confession to make. Lately, I have been intolerant of people who “push my buttons.” Some call it compassion fatigue. It seems to me more like compassion drain. One co-worker puts it bluntly, “You're letting people chip away at your ‘Give-a-Damn.’” It's true.

I ask God for help. “Give me a reminder to see Jesus in everyone I encounter,” I ask. Not satisfied with a little tap on the shoulder – I need a reminder that figuratively hits me over the head. I want something so big and bold that it will help me to always remember. I wait.

Then God tapped me on the shoulder eight times and reminded me how our night staff – Al, Tina, Noah, Jeff, Liz, Tonette, Jim, and Crystal – show me every night how to find Jesus in everyone they meet. He showed me the patience and calm demeanor our staff maintains in the midst of vulgarity and repeated threats. He showed me the kindness and respect they give to the men and women who come into Nightwatch who are tired, frustrated and hungry. He showed me the compassion and determination they reveal trying to get the most vulnerable people into shelter each night.

Our staff inspires me because, whether they call it that or not, they see Jesus in everyone. Help me, God, to do the same. ●



# NIGHTWATCH

**Serving the night  
community in the  
name of Christ**

# give BIG



**Save the Date!**

Please remember  
Nightwatch on May 9  
for GiveBIG.

**Volunteer Open House**

Find your favorite  
volunteer job!

**Thursday, April 5, 2018**

**7:30–8:00 pm**

RSVP or questions:  
[info@seattlenightwatch.org](mailto:info@seattlenightwatch.org)

Find out more:  
<http://tinyurl.com/ydaqfjsx>

# Memorials & Tributes

## Memorials

Bill Branom  
Mary Branom  
Charley Bush  
Jay & Gail Winberg  
Matthew Byk  
John Byk  
Joe Curtis  
Robert & Roberta Brown  
John Darrah  
Linda Bush  
Rose & Hank Fukano  
Judges of King County  
Superior Court  
Craig Davis  
Bruce Davis  
Robert Domzalski  
Mark & Lisa Domzalski  
Tony Domzalski  
Mark & Lisa Domzalski  
Pat Domzalski  
Bud Forbes  
John & Jody Fenlason  
Rick & Lorri Reynolds  
George & Carolyn Rippee

Keith & Kay Forbes  
Linda Martin  
Pete Gudger  
Cheryl Gudger  
Mal Higgins  
Linda Martin  
Mary Ellen Ingersoll  
Jim & Jan Sullivan  
Helen Koller  
Janet Buck  
Isamu Kurashige  
Christine Murphy  
Dick Lamb  
Kurt & Perdiz Jacobsen  
Al & Maxine Lobb  
John & Jody Fenlason  
Larry & Diana Lulofs  
Tim Lulofs  
Bill & Ruth Meals  
Jennifer Johnson  
Gene & Barbara Peck  
Rick & Lorri Reynolds  
Edith Root  
Leonard Root

Dick Shipe  
Gary & Theresa Shipe  
Jane Shipe  
Stephen Shipe  
& Marta Pasztor  
Mary Speltz  
Greg Speltz  
Zollie & Sylvia Volchok  
Tony Volchok  
& Cindy Monsen  
Glenn & Shirley Weed  
Andy & Ramona McBeth  
Jim & Cynthia Weaver  
Gilbert Weiss  
John Weiss  
& Corry Venema-Weiss  
Mary Wooldridge  
Holly Boone

## Tributes

Kelly Black's birthday  
Joy Hammersla  
Jennifer Byk  
John Byk  
My family  
Jan Creason  
Mike Potts  
Catharine Fletcher  
Kathy Todd  
Harvey & Geri Nelson

## Fragile

### By Ann Sakaguchi

I have been completely wrapped up with a family emergency in the past few weeks. Relatives and friends have rallied to see us through this intense and trying time. In the midst of it, a wise friend reminded me "Life is fragile."

I'm guessing that this happens for many of you, too. When the need arises, you have a community of support that would carry you through the crisis. I am deeply grateful for those who are helping my family in these tough days.

But after almost 14 years, Nightwatch is never far from my mind. I wonder about our homeless friends and our senior tenants. Where does their support come from? What happens if/when they are in the boat we're now in? And, as my friend said, "Life is fragile."

For the 130 or so homeless people we serve every night, Nightwatch offers community, if only for a few hours a day. We provide a safe bed inside and a hot meal to help sustain life.

In the Nightwatch apartments, 24 formerly homeless seniors had nowhere else to live. Tonight, they sleep safely in their own rooms instead of out in the cold.

Our Street Ministers, by a simple word or just a pair of socks, encourage hope to people who live on the streets.

The work of Nightwatch would not happen without your financial support. Life is fragile. You are helping Nightwatch sustain life for many, many people.

Please don't forget us. Life is fragile. Help us keep others alive. ●



## Shopping List

Please help by collecting these items for us to distribute to our homeless friends and tenants (travel sizes are preferred):

- Deodorant
- Lotion
- Shave cream
- Dental floss
- Lip balm
- Hand sanitizers
- Multi-vitamins
- Cough drops
- Pain relievers
- Kleenex packs
- Toothbrushes
- Toothpaste
- Bulk drink mix

For more information about these items please contact:  
liz@seattlenightwatch.org

## Amazon Wish List:

<http://tinyurl.com/zjo64fd>

Amazon donates to Nightwatch when you shop through Amazon Smile!

Here's the link:

<http://smile.amazon.com/ch/91-0964027>


## Shelter Dispatch Center & Senior Apartments

302 14th Ave. S  
Seattle, WA 98144

**Contact us:**  
PO Box 21181  
Seattle, WA 98111

206-323-4359 Administration  
206-860-4296 Senior Housing  
206-329-2099 Shelter Dispatch

[Info@seattlenightwatch.org](mailto:Info@seattlenightwatch.org)  
[www.seattlenightwatch.org](http://www.seattlenightwatch.org)

 Follow us on Facebook!